



2013
MISSOURI
State Shoot
May 13, 14, 15, 16, 17, 18, 19

2,000 Registered Targets
518 Trophies to
In & Out of State Shooters

2012 PAYOFF OVER \$104,000

Over \$50,000 in Trophies and Prizes
Guaranteed Added Money

~ ADDED MONEY ~

\$4,700 by MTA

\$500 by ATA

\$2,000 by Bob Burg

\$1,400 by MTA Officers & Directors

\$1,000 by Gipson-Ricketts LLC

\$1,000 KCTA Gun Club

\$500 by Gateway Gun Club

THE CHALLENGER IMPACT TYPE-T



Caesar Guerini **Dynamic Tuning System (DTS)** now includes a comprehensive balance and recoil control system.



**CÆSAR
GUERINI**

4 1 0 . 9 0 1 . 1 1 3 1

www.gueriniusa.com

The Type-T is the culmination of all of Caesar Guerini's technical development in the D.T.S. (Dynamic Tuning System) philosophy. Point-of-impact, overall weight, stock fit, trigger system, recoil characteristics, and balance are all customizable. Never before has a shotgun had more ability to adjust to a shooter or target presentation. The 17mm tall tapered rib fills the need for a mid-height rib as compared to our standard high-rib trap models but, amazingly offers the same range of adjustability. Over-and-under models are available in 30", 32", and 34" barrel lengths while the Unsingle is only available in 34".

Welcome to Missouri's Lake of the Ozarks!

Whether you knew it or not, the 60 trap MTA Gun Club at Linn Creek is located right in the middle of one of the premier vacation destinations in the United States...the Lake of the Ozarks!

Within 30 minutes of the MTA GUN CLUB there are...

- Over 7,700 motel/hotel/resort rooms, condos and campground sites.
- 100+restaurants, offering everything from burgers to steaks, both on and off the water.
- The largest outlet mall in Missouri, featuring over 110 factory direct outlets.
- More than 150 specialty shops including antiques, gifts, apparel and souvenirs.
- 15 beautiful Championship Golf Courses, offering award winning design.
- The 54,000 acre Lake of the Ozarks, featuring over 1,150 miles of shoreline.
- The largest state park in Missouri, the 17,000 acre Lake of the Ozarks State Park.
- Water parks, miniature golfing, go carts, country music shows, boat rental and excursions, marinas, fishing, skiing, hiking, museums, cave tours, horseback riding, bowling, arcades, even a haunted hotel!

...and it's all within 30 minutes of the MTA GUN CLUB!

**Come once and you'll want to come back,
you may even decide to stay...WE DID!**

**TO PLAN YOUR MISSOURI TRAPSHOOTING
VACATION, VISIT THESE WEBSITES:**

www.funlake.com
www.lakeareachamber.com
www.lakelinks.com
www.camdentonchamber.com

Welcome Trapshooters
One of the Lake's most valued groups!

We truly appreciate your business and look forward to being your host here at the beautiful Lake of the Ozarks

Lake of the Ozarks Convention & Visitor Bureau

www.funlake.com

Paper or Plastic?



The Gold Medal line of target shooting ammunition didn't get its name by chance. Whether your discipline is Trap, Skeet or Sporting Clays, we have a load to fit your needs. Winning shooters have long preferred the Federal Premium® brand with its patented one-piece 12S3 or 12S0 wad. All you have to decide is which hull you prefer to win your own gold medal.

Federal—the choice of Champions!

 **FEDERAL
PREMIUM**
AMMUNITION

www.federalpremium.com

MTA GUN CLUB

is located 4 miles east of Camdenton, MO on Highway 54,
then 6 miles east on Highway "A"



For Program & Accommodation Information:

Lyndle Pruett, Manager

51 Trapshooters Road
Linn Creek, MO 65052

Gun Club phone: 573-346-2449 • fax: 573-346-4507
Web page: www.motraps.com • email: motraps@gmail.com

For Resort & Motel Information:

Lake area Chamber of Commerce

Lake Ozark, MO 65049
phone: 1-800-451-4117 or 573-964-1008

Camdenton Chamber of Commerce

phone: 1-800-769-1004

Private plane accommodations:

Lee C. Fine Airport, Lake of the Ozarks State Park
Linn Creek – Grand Glaize Airport and Camdenton Municipal Airport

PRE-SQUADDING INFORMATION

The MTA will offer pre-squadding for this shoot using the Internet website www.presquad.com. This is a very easy system to use which lets you pick your own squads. You can return to the website anytime to look over the pre-squadded shooters. Pre-squadding will start on April 8 and end on May 6, 2013. A non-refundable charge of \$2.00 per person, per event, must be received within 10 days of pre-squadding or your pre-squadded position will be opened back up.

50 TARGETS PER FIELD

All events will be shot 50 targets per field. Banks are numbered from west to east. The numbers on the trap houses will not change for the duration of this shoot.

RELOCATION OF SQUADS

Please note that squad hustlers have the authority to move squads to different nearby traps at any time. This will be done in an effort to expedite the progress of events.

SHOOTERS MUST SQUAD RESPONSIBLY

Every attempt will be made to fill handicap squads. Squadding at one position in handicap events, and then actually shooting at a different position or squad can create yardage conflicts on the firing line. When squadding or returning unused posts, please remember that your actions have an impact on other shooters, in addition to yourself.



Bolling Technologies Group

*for cashiering assistance at your next shoot
contact*

Diane and Mike Bolling

mbolling@bellsouth.net

770-439-6359 (h)

404-219-4215 (c)

President's Message

The Missouri Trapshooters Association Officers and Directors extend our warmest and heartfelt welcome to our Missouri State Shoot, whether this is your 1st or 124th.

We would like to project a challenge to each shooter to assist in the expansion and growth of our great sport of trapshooting by introducing and bringing a friend, a relative or just an acquaintance. We welcome any comments (pro or con) and/or new ideas that would be beneficial to the majority.

The MTA Board has again selected an exciting program of events starting with preliminary targets thrown on Monday and Tuesday and the HOA events beginning with Event 7 on Wednesday. Also, be sure to make plans to attend the State Meeting and the Hall of Fame induction on Friday evening.

I want to thank and recognize all of our vendors, advertisers, Lyndle & his staff that make our State Shoot listed as one of the best. Of course, we acknowledge that the reason the shoot is successful year after year is because of you, the SHOOTERS. Thank you for that.

Come enjoy – but most of all, stay safe.

Dr. Chris Franklin
PRESIDENT MTA

Greeting from the Manager

The Staff and I are grateful to have this opportunity to welcome all shooters, families and visitors to our 2013 Missouri State Shoot. Our main objective is to assist you in creating a treasured memory of your visit and to provide a safe environment.

With the continued support of the MTA Officers, Directors and our loyal supporters, we anticipate 2013 to be another successful year.

Good luck and good shooting.

Thank you all.

Lyndle Pruett
MANAGER

2013 MTA OFFICIALS

1st VICE PRESIDENT



DAVID WILLIAMS
Eastern Zone - Hazelwood

PRESIDENT



CHRIS FRANKLIN
Central Zone - Camdenton

2nd VP - DIRECTOR 2012-15



RANDY STITT
Western Zone - Blue Springs

SECRETARY



TOMMY ROBERTS
Central Zone - Lancaster



TREASURER



RICK FULLER
Director 2011-14
Central Zone - Rolla

YOUTH CHAIRMAN



TONY SHOCKLEY
Eastern Zone - Washington

MANAGER



LYNDLE PRUETT
Linn Creek

2012 EX-OFFICIO



STEVE RICKETTS
Western Zone - Kansas City

DIRECTOR 2012-15



STEVE FULLER
Central Zone - Macon

DIRECTOR 2012-15



MARVIN BEUMER
Eastern Zone - Augusta

DIRECTOR 2010-13



DAVE STOGDILL
Central Zone - Rolla



DIRECTOR 2010-13



ATA DELEGATE

RANDALL CRAWFORD
Western Zone - Kearney

DIRECTOR 2010-13



TOM ROMBACH
Eastern Zone - Washington

DIRECTOR 2011-14



BOB OVERSTREET
Eastern Zone - Floristell

DIRECTOR 2011-14



DEMPSEY GOTTSCHALK
Western Zone - Kansas City



13547 Missouri Bottom Rd.
 Bridgeton, MO 63044
 Phone: 314-344-1050
 Toll Free: 888-344-1050

E-mail: manager@gatewaygunclub-stl.com
www.gatewaygunclub-stl.com

~ Club is handicap accessible ~

2013 Registered Shoots

May 3, Prem. Day Eastern Zone
 May 4 & 5 Mo. Eastern Zone
 June 2, Illinois Warm Up
 Oct. 27, Team Shoot

July 7, Monthly Shoot
 Aug. 3, Grand Warm Up
 Sept. 8, Monthly Shoot
 October 13, NTD

NOW OPEN!

Our New
 Indoor Pistol Range
See website for details

OPEN 7 DAYS A WEEK – SEE WEBSITE FOR HOURS

9 combination trap & skeet fields + 2 trap fields - total, 10 program traps & 1 practice
 All fields have Pat-Trap with CRV releases & lights for evening shooting

We Have Trap, Bunker Trap, Wobble Trap, Skeet & International Skeet

The finest craftsmanship for all of your shooting accessories...



Double Shell Pouches
 Clips on Belt



Shell Bags
 Over 80 Combinations



Accessories
 Blinders, Magnet Pads, Clips, and more!



Single Shell Pouches
 Over 30 Combinations



Mesh & Leather
 Empty Pouches

NEW
Club-Team Program
 Special pricing with minimum order
 Call for details.

Need top quality trophies for your next shoot? Special pricing available for any size trophy order.



www.shamrockleathers.com

Ph: 800.728.5184 Email: info@shamrockleathers.com

STATE TEAM

2013 STATE PATCHES WILL BE AWARDED based on 2012 performance. Shooters, to qualify, must have shot minimum numbers of targets as follows:

	MEN	LADIES	JR. & SUB. JR.	VETERAN	SR. VETERAN
SINGLES -	2,000	1,200	1,000	1,500	1,200
HANDICAP -	1,500	1,000	1,000	1,200	1,000
DOUBLES -	1,000	500	500	800	500

2013 STATE TEAMS

MEN'S TEAM

Leo Harrison III, Captain	Brad Casner
Marvin Beumer	Dennis Alkire
Dennis Whitlock	Steve Fuller
David Deitch	Gary Gooch
Bobby Chambers	Randy Buhr

LADIES TEAM

Rachel Hopkins, Captain
Pamela Lewis
Dana Hoover

JUNIOR TEAM

Trevor Shockley, Captain
Corey Spruill
Elijah Bridges
Nate Carl

SUB-JUNIOR TEAM

Samantha Foppe, Captain
Zachary Smith
Kody Runions
Robert Osborne
Tricia Cook

VETERAN TEAM

Ron Carneal, Captain
Tom Rombach
Dempsey Gottschalk
Mike Childers
Forrest Garland

SENIOR VETERAN TEAM

Curt Wakely, Captain
David Williams
Norman Provow
James Overstreet
Larry Freeman

MISSOURIANS MAKING 2012 ATA ALL-AMERICAN TEAMS

MEN'S FIRST TEAM

Leo Harrison III
Marvin Beumer

LADY I FIRST TEAM

Rachel Hopkins

SUB-VET SECOND TEAM

Brad Casner

JUNIOR SECOND TEAM

Trevor Shockley
Elijah Bridges

VETERAN FIRST TEAM

Ronald Carneal

SUB-JUNIOR FIRST

Samantha Foppe

SENIOR VET FIRST TEAM

Curt Wakely



Vacation Rentals



2, 3, 4 & 5 BEDROOM CONDOS AVAILABLE

Every Condo Includes:

GAS GRILLS IN ALL UNITS

BATH AND LINENS

DECK OVERLOOKING WATER

Stay 4 nights pay for 3 nights!

Located approximately 4 miles from "A" Road on Osage Beach Parkway
We are located within minutes of dining, shopping and golf.

Lazy Days Condominiums

611 Lazy Days Road (Lake Road 54-62) Osage Beach, MO 65065

573-552-8625

Your Hostess Mickey La Ferla

MTA ANNUAL MEETING

The MTA Annual Meeting and Hall of Fame Induction Ceremony will be held Friday immediately following Event 15 shoot-offs. At this Meeting, three directors and the ATA delegate and alternate delegates for the ensuing year will be elected. We encourage all MTA members to participate in this meeting by attending and voting. The Missouri State Team Members will also be recognized.

HALL OF FAME MEMBERS

1977 - Lela Hall Frank*	1986 - Leo Harrison	2002 - B.J. & Olabell Wilson
1977 - J.A.R Elliot*	1987 - Bill Lyons*	2003 - M.E. Wolfenbarger
1977 - Oscar B. Franz*	1988 - Ray Fienup*	2004 - Larry Cox*
1977 - W.F.J. Fienup*	1989 - James D. Overstreet	2005 - Larry McKinley
1978 - Ernest Jelley*	1990 - Eddie Schneider	2006 - Paul Larsen*
1978 - Harvey Dixon*	1991 - Leo Harrison III	2007 - Ron Carneal
1978 - David G. Henry*	1993 - Robert L. Burg	2008 - Bob Overstreet
1979 - John Broughton*	1994 - Karrol Hillebrand	2009 - Larry Freeman
1979 - Russell W. Elliot*	1995 - James Boulware*	2010 - Tobias Cohron*
1980 - Arthur Killam*	1996 - Steve Carmichael	2011 - Willis Corbett
1981 - C. E. Barnhart	1997 - Barbara Frederick	2012 - Claude Felix
1981 - Riley Thompson*	1998 - M.L. McGuire	2013 - Curt Wakely
1982 - Charles B. Spencer*	1999 - Joe Clements*	
1983 - Myron Willoughby*	2000 - Earl Roth*	
1984 - George P. Nicolai*	2000 - C.B. Eaton*	
1985 - Virgil Pitman*	2001 - Cliff Cockayne	

*Deceased

Congratulations to the 2013 HALL OF FAME INDUCTEE CURT WAKELY



ANNOUNCEMENTS

CLASSIFICATION, CASHIERING & SQUADDING
MONDAY thru SATURDAY, MAY 13-18, 8:00-5:00 pm
SUNDAY, MAY 19, 8:00 am - LAST FLIGHT

Practice Traps open beginning May 11, 8:00 AM

**2013 ATTENDANCE PINS WILL BE GIVEN TO ALL SHOOTERS.
A STATE SHOOT 100 & 200 STRAIGHT PIN WILL BE GIVEN FOR
INITIAL 100 OR 200 STRAIGHT BROKEN AT THE STATE SHOOT**

MISSING SQUAD PENALTY: Any shooter missing their squad and desiring to re-enter the event shall pay a \$10.00 penalty.

MAKE-UPS: A maximum of 50 targets can be made up per event. If you miss your squad for more than 50 targets, you must be re-squadded.

CARRY-OVERS: Ties for trophies in Singles and Doubles events will be carried over by sub-event to the next like event. Unless specified otherwise, shoot-offs will be for trophies only and will be combined if possible. Handicap ties will be determined daily.

TROPHIES: ATA rules will be used to determine winners of ALL TROPHIES. Regardless of whether trophies are furnished by the MTA or ATA. ATA rules regarding "fall backs" will be used to determine ALL winners.

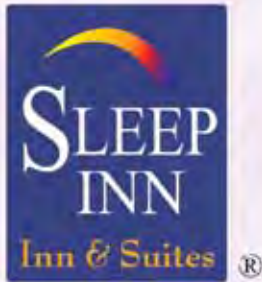
SHOOT-OFFS: Shooters will be called 3 times for shoot-offs. A shooter who fails to appear will forfeit. If no shoot-off contestants appear, a winner will be determined by management.

SUB-JUNIORS AND JUNIORS: May shoot targets and trophies only for \$27.00 per 100, or full price throughout the tournament, depending upon their decision at initial classification. Those shooting at the reduced rate may not play options and will not be eligible for any added money.

ATA RULES: The Amateur Trapshooting Association rules will govern all points not otherwise provided.

SPECIAL CATEGORY SHOOTERS: All Lady I, Lady II, Sub-Juniors, Juniors, Junior Gold, Sub-Veterans, Veterans and Senior Veterans desiring to compete for trophies in these categories must properly declare their category at time of classification. Without such declaration, the shooter will not be allowed to compete for applicable special category trophies. A shooter eligible for a special category designation is not required to declare a special category if they do not desire to compete for special category trophies. A shooter not desiring to declare a special category needs to bring this to the attention of the classification personnel. It is the shooter's responsibility to verify proper classification before leaving the classification desk. The declaration is binding for the duration of the shoot. A shooter desiring to obtain All American points for a special category must be classified in the special category. If you declare your category you will be entitled to the added money in that event in conjunction with your score (money goes with the score). You will still be able to take championship or category trophies. You will be able to shoot for added money (I.E. 1st-2nd-3rd, etc. class purses and yardage money). Trophies will go according to ATA rules.

PAYOUTS: Payouts will be available after 12:00 noon the day following the event. Sunday's payouts will be mailed.



BY CHOICE HOTELS

Choice Hotel[®]
Best of the BrandSM

SLEEP INN & SUITES CAMDENTON LAKE OF THE OZARKS

Platinum Award Winning Hotel

1390 East US Highway 54
P.O. Box 267
Camdenton, MO 65020
Phone 573.346.4501
Fax 573.346.7845
888.753.3730

~ Enjoy These Great Amenities ~

- Government Rates
- High Speed Internet WI-FI
- Laundry Service (Coin Operated/Dry Cleaning)
- Pool (Indoor/Outdoor/Hot Tub)
- Vending Machines
- Wake Up Call
- Wheelchair Accessible
- 24 Hr. Front Desk
- Boat Charger Hook-Ups
- Deluxe Continental Breakfast (Free Hot/Cold)
- Fireplace
- Fitness Facility
- Free Parking
- Free USA Today



www.sleepinnlakeoftheozarks.com



ENTRY

Your entry will not be considered made until you have paid. PERSONAL CHECKS WILL BE ACCEPTED IN U.S. funds only FOR THE AMOUNT OF ENTRIES. A shooter who has already cashed for an event may not later enter the purses & options after that event has been called to the line. All shooters wishing to play any option must provide their Social Security number when classified.

There are no compulsory options in any events.

**VISA/MASTERCARD & DISCOVER
accepted for entries, RV spaces, etc.**

RIGHTS AND PRIVILEGES

The Missouri Trapshooters Association reserves the right to postpone or call off any event in this tournament and to change the time for the starting of any or all events, if in the judgement of the Shoot Management such action is necessary. In the case entries are so numerous that darkness or any other cause prevents the finish of any event the same day it is commenced, the Shoot Management reserves the right to stop shooting at any time it is deemed necessary. In this case, weather permitting, events will resume where left off at 8:00 a.m. the next day.

WHEN A SQUAD IS UP

A squad will not be held up for a tardy member. If the tardy shooter does not appear, IN THREE MINUTES, the shooter will be scratched and may be re-squadded in a later squad, subject to re-squadding penalty or allowed to make-up up to a maximum of 50 targets.

ATTENTION SHOOTERS

1. Daily Fees: ATA, \$3.00; MTA, \$2.00.
2. MTA Target Fees: \$2.00 per 100 targets.
3. All guns must be unloaded with the action open at all times, except on the firing line.
4. ATA ruling on alcoholic beverages and drugs will be enforced.
5. The management reserves the right to refuse entry or disqualify anyone who interferes with the harmony of the shoot.

TRAILER HOOKUPS

Accommodations for 329 trailers with electric and water hookups is \$140.00 per shoot. *Advanced reservations are required.* Please call first to be put on RV list. Availability is accepted by request date and must be confirmed by Management. *Do not send money* until confirmed spot is acknowledged. A dump station is located on the grounds. Showers and restrooms are open 24 hours during the shoot. Commercial space with electricity is \$130.00 for 20-foot space. All awnings, stakes, tables and signs must be kept behind the electrical post. Advance reservations accepted upon receipt of \$130.00. Additional \$35.00 required for living quarters. Restrooms and showers were completely remodeled in 2009.

GOLF CART RENTALS

Golf carts will only be available for rental with ADVANCE RESERVATIONS and deposit. Call the MTA office 573-346-2449 for further details and to make your reservations prior to May 7th.

GOLF CART - ATV REQUIREMENTS

Before operating a golf cart/ATV on the grounds you must obtain a permit from the MTA office which will be available at no cost. To obtain a permit you must produce a valid driver's license and proof of \$300,000 "off premises" liability insurance coverage on privately owned carts or ATV's. No one may operate a cart unless they possess a valid driver's license.

***No Gambling Allowed on the Grounds.
Dogs must be on a leash and controlled at all times.
No pets allowed in the clubhouse.***



**Jake
Culpeeper's
Cattle Company**

**Welcome Shooters
show us your ATA card for discounts!**

*Open Daily
Lunch and Dinner 11:00 am*

573-348-8989
5923 Osage Beach Parkway, near KK

\$4,000 MISSOURI SCHOLARSHIP PROGRAM

Active Missouri Junior shooters completing high school coursework are encouraged to submit application by April 15 for this scholarship offered by the MTA. For complete details contact: Anthony Shockley, 4608 Tin Man Alley, Washington, MO 63090.

LIFE MEMBERSHIP MTA

Life membership may be obtained by filling out an application at any Missouri ATA registered gun club or by sending application to: Tommy Roberts, PO Box 53, Lancaster, MO 63548. Life memberships are \$100.00.

REGISTRATION CERTIFICATE

This certifies that the Missouri Trapshooters Association has been authorized to hold a registered shoot on May 13-19, 2013. The ATA rules will govern this shoot and the scores will be included in the official records.

WELCOME NON-RESIDENTS

We welcome all non-resident shooters to our state shoot. You represent an important part of our customer base and we appreciate your attendance. All of the added money and many trophies are open to all shooters. We will be honored to have you with us. Of the 579 trophies, **86** are "Open," **253** are "In-State" and **240** are "Out-of-State." NOTE: Out-of-State trophies are exactly the same as state trophies except for ATA trophies. All trophies must be picked up during the shoot. No trophies will be shipped.

PICTURES

Henry Carroll of Farmington, Arkansas will be on hand to photograph winners, individual and squad pictures.

FOOD WILL BE SERVED ON THE GROUNDS

~~ no other beverage or food vendors allowed ~~

ENTERTAINMENT FOR THE LADIES

Trip to the Isle of Capri Casino - Friday, May 17th

Includes \$5.00 in tokens – Free Lunch Ticket

Bus will leave approx. 9:00 a.m. and return 5:00 p.m.

Be sure to sign up prior to departure at front desk

Free Bingo will be provided Friday and Saturday at 1:00 p.m.

SHELLS

Shells will be for sale on the grounds at competitive prices. No shell sales other than by MTA. If you wish to save your shells for reloading, please transfer them from your gun to your pocket or box. Picking up hulls will not be tolerated at any time. All shells must conform to ATA specifications. Shoot Management reserves the right to inspect any shells. Any loads that disturb the harmony of the Shoot will be investigated; and, if necessary, the shooter will be re-squadded or disqualified.

PRACTICE ROUNDS

Practice rounds are \$6.00 per 25 targets. Four traps will be available. Practice fields are subject to use for registered shooting if circumstances dictates.

FORD PURSES

The winner of each sub-event and the total will receive the \$2.00 entry fees. Ford purses will be decided by reverse score system where a winner has not been determined. Total will divide. Any shooter winning one of the first four Ford purses will not be eligible to win another except total.

HOT DOG ROAST

On Thursday evening, immediately after the shoot-offs, the vendors have generously donated another "Hot Dog Roast" for all shooting participants and their families, sponsored by Bob Schultz Target Shotguns.

CLASSIFICATION

Any question of residency must be decided at time of classification. All shooters must have a complete list of their 16-yard scores and averages up to date. Classification will be based on average and known ability. Shooters must shoot Class B or higher if they have shot less than 500 registered 16-yard targets and at 23-yard handicap (minimum) if they have shot less than 500 handicap targets in 2012 and 2013 combined. *All targets shot Monday and Tuesday may be used to meet minimum target requirements. Senior Veterans are exempt from penalties.

SINGLES

98% and Over	AAA
96.25% and Under 98%	AA
94.75% and Under 96.25%	A
93% and Under 94.75%	B
90% and Under 93%	C
Under 90%	D

*High scores and ties will advance one class
(Except Preliminary Days)*

DOUBLES

Shooters must shoot Class B and higher if they have shot less than 500 registered doubles in 2012 and 2013 combined*

96% and Over	AAA
92% and Under 96%	AA
89% and Under 92%	A
86% and Under 89%	B
82% and Under 86%	C
Under 82%	D

*High scores and ties will advance one class
(Except Preliminary Days)*

* Anyone may shoot for “targets only” without penalty yardage and penalty on 16’s and doubles – however they will not be eligible for any added money, trophies or options. Decision must be made at time of classification.

CHECK YOUR SCORES!
ATA RULES WILL APPLY

*All scores are final 60 minutes after
the last score sheets are posted in the clubhouse.*

2012 ATA REFUND TO MISSOURI

Dues	\$1,872.00
Fees	6,950.00
Life Members.....	725.00
Total Refund	\$9,547.00

MISSOURI YOUTH PROGRAM GUN RAFFLE

Drawing Saturday evening at the Fall Handicap

Tickets on sale NOW!

\$10.00 each



ITHACA 4E 12 ga. TRAPGUN

“MINT CONDITION”

Valued at approximately \$3,500.00

Gun Donated by Bob Burg

PROCEEDS TO BENEFIT MISSOURI’S YOUTH PROGRAM

WORLD CLASS TRAP TIPS

FROM RICHARD MARSHALL JR.



1. **Confidence is a state of mind!**
If you believe it, you can do it!
2. **Proper gun fit...is the key to every shooters success**
3. **Concentrate and use a catch phrase... "see the target"**
4. **Be positive and give 110% on every target!**
5. **When all else fails, go back to the BASICS!** Your setup foot position, hold points and eye position

To learn more about Richard Marshall Jr. Shooting Clinics, group or private lessons, call **702-466-6210** or contact Richard at www.richardmarshalljr.com

- 21 time All American
- 2 time All American Men's Captain
- 7 time Trap & Field Average Winner
- 4 Grand American World Trap Shooting Titles
- 70+ Grand American Trophies
- 45 Satellite Grand Championships
- 2005 Grand American Record 700 Straight
- Nebraska Trapshooting Hall of Fame Member
- 60+ Resident & Non-Resident State Championships



WORLD CLASS TARGETS FOR WORLD CLASS SHOOTERS

West: 800.872.7888 East 800.423.6077
North Central: 574.772.3271 Midwest: 800.647.2898

1300 Post Oak Blvd., Ste. 680
Houston, TX 77056 800.322.7855 www.whiteflyer.com

MONDAY, MAY 13, 2013

HALL OF FAME INDUCTEE CURT WAKELY DAY

Practice Traps open at 10:00 a.m. ~ Program starts at 11:00 a.m.

EVENT 1

100 16-YARD TARGETS

Entry: Targets and Trophies\$32.00
MTA Target Fee\$ 2.00

Options – Ties Divide

\$5.00 each 50 (3) 100% (Open).....\$15.00
4 Lewis Classes – 100%\$15.00

10 TROPHIES - OPEN

AAA-AA-A-B-C-D, Lady, Sub-Junior, Junior, Veteran, Sr. Veteran

EVENT 2

100 HANDICAP TARGETS

Entry: Targets and Trophies\$32.00
MTA Target Fee\$ 2.00

Options – Ties Divide

\$5.00 each 25-100%\$20.00
\$5.00 each 50 (3) 50%-30%-20%\$15.00
Total (100) 40%-30%-20%-10%\$10.00
4 Lewis Classes – 100%\$15.00

8 TROPHIES – OPEN

Champion, 18-21^{1/2} yd., 22-24^{1/2} yd., 25-27 yd., Lady,
Sub-Junior, Junior, Veteran, Sr. Veteran

EVENT 3

50 PAIR DOUBLES

Entry: Targets and Trophies\$32.00
MTA Target Fee\$ 2.00

Options – Ties Divide

\$5.00 each 50 60%-40% (Open).....\$10.00
Total (50 pair) 60%-40% (Open)\$10.00
4 Lewis Classes – 100%\$15.00

10 TROPHIES – OPEN

AAA-AA-A-B-C-D, Lady, Sub-Junior, Junior, Veteran, Sr. Veteran

GRAF'S RELOADING

GUNS  AMMO

ST. CHARLES, MO

FOR YOUR CONVENIENCE,
ALL RELOADING SUPPLIES ARE HERE
ON THE MTA GROUNDS!

- *Shot* • *Powder*
- *Wads* • *Primers*
- *Parts*

STATE SHOOT SPECIAL

BRING YOUR RELOADER

Factory-trained MEC repairman Brad Kersting will be on the MTA grounds Friday & Saturday to make repairs, tune-up loaders and answer questions. Drop loaders off early; limited repairs available.

~ Call Mike Graf ~

314-308-1357

www.grafsreloading.com

**GRAF'S
RELOADING
GUNS  AMMO**

For all your reloading needs!



TUESDAY, MAY 14, 2013

PRESIDENT DOCTOR CHRIS FRANKLIN DAY

Practice Traps open at 9:00 a.m. ~ Program starts at 10:00 a.m.

EVENT 4

100 16-YARD TARGETS

Entry: Targets and Trophies\$32.00
MTA Target Fee\$ 2.00

Open Options - Ties Divide

\$5.00 each 50 (3) Open 100%\$15.00
4 Lewis Classes – 100%\$15.00

10 TROPHIES - OPEN

AAA-AA-A-B-C-D, Lady, Sub-Junior, Junior, Veteran, Sr. Veteran

EVENT 5

100 HANDICAP TARGETS

Entry: Targets and Trophies\$32.00
MTA Target Fee\$ 2.00

Options – Ties Divide

\$5.00 each 25-100%\$20.00
\$5.00 each 50 (3) 50%-30%-20%\$15.00
Total (100) 40%-30%-20%-10%\$10.00
4 Lewis Classes – 100%\$15.00

8 TROPHIES – OPEN

Champion, 18-21^{1/2} Yd., 22-24^{1/2} Yd., 25-27 Yd., Lady, Sub-Junior, Junior, Veteran, Sr.

EVENT 6

50 PAIR DOUBLES

Entry: Targets and Trophies\$32.00
MTA Target Fee\$ 2.00

Options – Ties Divide

\$5.00 each 50 60%-40% (Open)\$10.00
Total (50 pair) 60%-40% (Open)\$10.00
4 Lewis Classes – 100%\$15.00

10 TROPHIES – OPEN

AAA-AA-A-B-C-D, Lady, Sub-Junior, Junior, Veteran, Sr. Veteran

**MONDAY'S AND TUESDAY'S CLASS WINNERS DO NOT ADVANCE,
HOWEVER EARNED YARDAGE WILL BE AWARDED**



\$10,000 ADDED MONEY!!!

For all our shoots in 2013* from April through Labor Day shoot we will add money to each Lewis Class in 48 separate events! \$500 will be reserved for a special HOA Lewis Class on cumulative total score for any 10 handicaps. You can shoot as many handicaps as you want in these shoots and your ten highest scores will be used! Full details will be in our future shoot programs.

*Excludes August 17-18 shoot

~ PLAN NOW TO ATTEND ALL OF OUR SHOOTS ~
CALL OR EMAIL TO PRESQUAD FOR ANY OF OUR SHOOTS

2013 Shoot Dates

April 6-7 Interstate	August 17-18
May 4-5 Western Zone	August 30 – Sept. 2 Labor Day
May 24-27 Bill Lyons Memorial	September 14-15
June 13-16 Spring Fling	October 12-13
July 4-7 Anniversary Shoot	October 19-20
July 20-21	November 2-3
August 1-4 Summer Spectacular	

phone: 816-532-4427 • email: kctapaw@yahoo.com
6420 NE 176th Street, Smithville, MO 64089

WE THANK YOU FOR YOUR PAST SUPPORT
WE LOOK FORWARD TO SEEING YOU IN 2013!

WWW.KCTRAPS.COM

THE STOCK SHOP, INC.

Custom Gunsmithing

121 Gates Avenue
Kenyon, MN 55946

We Look Forward to Serving You!



Gunfitting
Laser Targeting System
Hard & Soft-top Combs
R.A.D. Systems
4-way Adjustable Combs
Goopy Pads
GRACOIL Systems
Mercury Recoil Reducers
KICK EEZ Pads
Foxy's Magnetized Gun Rest

*Ask about our replacement adjustable hardware
for Browning and Beretta shotguns*

*Look for Us at the
Grand American & Heartland Grand*

Tom & Ann Dee Larkin

Shop: 507-789-5523

Cell: 507-254-4694 or 507-838-5318

www.thestockshop.net

"Get 'er done at the Stock Shop"

WEDNESDAY, MAY 15, 2013

Practice Traps open 8:30 a.m. ~ Program starts at 9:00 a.m.

EVENT 7

JON B. MESSBARGER SINGLES

100 16-YARD TARGETS

Entry: Targets and Trophies\$32.00
MTA Target Fee\$ 2.00

Options

\$5.00 each 50 (3) Open 100%\$15.00
Total by Class (one money)\$10.00
4 Lewis Classes – 100%\$15.00

17 TROPHIES

Missouri Class AAA, AA, A, B, C, and D
Out-of-State AAA, AA, A, B, C, and D
Open–Lady, Sub-Junior, Junior, Veteran, Sr. Veteran

OPEN – \$300.00 ADDED MONEY – BY MTA

Divided equally in six classes 60%-40%, High Gun

EVENT 8

RACHEL HOPKINS HANDICAP

100 HANDICAP TARGETS

Entry: Targets and Trophies\$32.00
MTA Target Fee\$ 2.00

Options

Five Ford Purses – \$2.00 each\$10.00
\$ 5.00 on each 25 – 100%\$20.00
\$10.00 on each 50 (3) – 50%-30%-20%\$30.00
Total 100 – 40%-30%-20%-10%\$10.00
4 Lewis Classes – 100%\$15.00
4 Yardage Groups – 50%-30%-20% (total 100)\$12.00
Each group shoots for its own money. Groups 18-21^{1/2}, 22-23^{1/2}, 24-25^{1/2}, 26-27

OPEN – \$300.00 ADDED MONEY – BY MTA

\$75.00 – 18-21^{1/2}	60%-40% HIGH GUN
\$75.00 – 22-23^{1/2}	60%-40% HIGH GUN
\$75.00 – 24-25^{1/2}	60%-40% HIGH GUN
\$75.00 – 26-27	60%-40% HIGH GUN

17 TROPHIES

Missouri Champion & Runner-up
Out-of-State Champion & Runner-up
Missouri 18-21^{1/2}, 22-23^{1/2}, 24-25^{1/2}, 26-27
Out-of-State 18-21^{1/2}, 22-23^{1/2}, 24-25^{1/2}, 26-27
Open–Lady, Sub-Junior, Junior, Veteran, Sr. Veteran

EVENT 9
LEO HARRISON III DOUBLES
50 PAIR DOUBLES

Entry: Targets and Trophies\$32.00
 MTA Target Fee\$ 2.00

Options

\$5.00 each 25 pair –60%-40% (Open).....\$10.00
 Total (50 pair) – 60%-40% (Open).....\$10.00
 4 Lewis Classes – 100%\$15.00

17 TROPHIES

- (6) Missouri Class AAA, AA, A, B, C, and D
- (6) Out-of-State AAA, AA, A, B, C, and D
- (5) Open Lady, Sub-Junior, Junior, Veteran, Sr. Veteran

OPEN – \$300.00 ADDED MONEY – BY MTA
Divided equally in six classes 60%-40%, High Gun

GIPSON-RICKETTS, LLC



18100 Cockriel Rd.
 Edgerton, MO 64444
 Office: 816-873-3184
 Fax: 816-873-3184

Lynn Gipson
 Cell: 816-289-2150
 kctalag@yahoo.com

Steve Ricketts
 Cell: 816-863-9003
 srickett@sbcglobal.net

www.gipsonricketts.com

THURSDAY, MAY 16, 2013

EVENT 10

Practice Traps open 8:00 a.m. ~ Program starts at 9:00 a.m.

CLASS CHAMPIONSHIPS

200 16-YARD TARGETS

Entry: Targets and Trophies\$64.00
MTA Target Fee\$ 4.00

Options

\$5.00 each 50 (4) - Open 100%\$20.00
\$10.00 each 100 - 60%-40% (by Class).....\$20.00
Total 200 - by Class 50%-30%-20% (by Class).....\$20.00
4 Lewis Classes - 100% (Ties divide).....\$15.00

40 TROPHIES

- (6) Missouri AAA, AA, A, B, C, and D (ATA)
(6) Missouri AAA-RU, AA-RU, A-RU, B-RU, C-RU, and D-RU
(8) Missouri Lady I, Lady II, Sub-Junior, Junior, Junior Gold, Sub-Veteran, Veteran, Sr. Veteran
(6) Out-of-State AAA, AA, A, B, C, and D
(6) Out-of-State AAA-RU, AA-RU, A-RU, B-RU, C-RU, and D-RU
(8) Out-of-State Lady I, Lady II, Sub-Junior, Junior, Junior Gold, Sub-Veteran, Veteran, Sr. Veteran

OPEN - \$600.00 ADDED MONEY - BY MTA
Divided equally in six classes 60%-40%, High Gun



August 7-17, 2013

World Shooting & Recreational Complex - Sparta, IL



www.shootata.com

2013 ATA STATE SHOOT BUCKLE AWARD

One(1) buckle to be awarded at each state/provincial shoot. Buckle goes to resident champion of handicap event preceding state handicap championship. A sum of \$500 will also be awarded (split 50-30-20 high gun) to top three resident shooters in same state event as buckle. State buckle winner will be eligible for another buckle and \$1,000 (split 50-30-20 high gun) at the 2013 Grand American by competing in the Presidents Handicap. See shootata.com for more details.

PULL FOR THE GUN CLUBS!

PROCEEDS TO BENEFIT ATA GUN CLUB FUND
RAFFLE ENDS AUGUST 16, 2013

Contact your State/Provincial Delegate or the ATA office for tickets.

For more information visit www.shootata.com

Only 1,200 Tickets Available
Express S4 Gas - \$9,200 VALUE

\$20 Per Entry





W.F.J. FIENUP HANDICAP EVENT 11

It is with great pleasure that the MTA recognizes Mr. William F. J. Fienup (better known as “Uncle Bill” to many) by naming an event in his honor at our State Shoot. Mr. Fienup was born on a farm near New Melle, Missouri, on December 16, 1890 and passed away on June 26, 1978. He took up trapshooting when he was 45 years of age, winning among many others, the Missouri State singles in 1946, doubles in 1947 and numerous trophies at the Grand over his 30 plus years attendance, remaining an active shooter past his 86th birthday. He held the Missouri high handicap average in 1937, 1940 and 1941. He was a very successful businessman in the can producing industry as President and Chairman of the Board of the R.C. Can Company which became the largest composite can company in the United States, due mostly to his ingenuity and inventions. He credited the sport of trapshooting with his success in business, believing that trapshooting trains and develops the brain by requiring concentration and practice.

Mr. Fienup’s picture appeared on the cover of our programs for several years. He was single-handedly responsible for making it possible for the MTA to have permanent home grounds since 1968. He had great visions for this ground to be used for the sport of trapshooting and we strive to meet his expectations. Through his unprecedented generosity, as shooters, we have all benefited from his unselfish desire to promote our great sport. In 1967, he created and funded the Foundation For the Junior Trapshooters of Missouri, Inc., making it possible for literally thousands of Missouri youth to be introduced to trapshooting. This Foundation continues to be operated by the Fienup family and generously supports youth trapshooting.

Mr. Fienup exemplified the true spirit of a trapshooter when he said, *“Trapshooting has been mighty good to me socially and in business, and whatever contributions to trapshooting I have been able to make are small compared to the benefits I have derived.”*

EVENT 11

W.F.J. FIENUP MEMORIAL HANDICAP

100 HANDICAP TARGETS

Entry: Targets and Trophies	\$32.00
HIGH GUN Guaranteed Purse.....	\$15.00
MTA Target Fee	\$ 2.00

\$500 HIGH GUN GUARANTEED PURSE

1st Place	\$250.00
2nd Place.....	\$150.00
3rd Place.....	\$100.00

For each 5 purse entries over 33, \$75.00 will be added beginning with 4th Place.

~ Not compulsory ~

Options

BT99 Lewis - 3 classes: winner gets gun, 2nd gets added money, ties divide.....	\$20.00
Five Ford Purses – \$2.00 each	\$10.00
\$ 5.00 each 25 – 100%	\$20.00
\$10.00 each 50 (3) – 50%-30%-20%	\$30.00
4 Yardage Groups – 50%-30%-20% (total 100)	\$12.00

Each group shoots for its own money. Groups 18-21^{1/2}, 22-23^{1/2}, 24-25^{1/2}, 26-27

17 TROPHIES

- (2) Missouri Champion & Runner-up
- (2) Out-of-State Champion & Runner-up
- (4) Missouri 18-21^{1/2}, 22-23^{1/2}, 24-25^{1/2}, 26-27
- (4) Out-of-State 18-21^{1/2}, 22-23^{1/2}, 24-25^{1/2}, 26-27
- (5) Open–Lady, Sub-Junior, Junior, Veteran, Sr. Veteran

OPEN – \$300.00 ADDED MONEY – BY MTA

\$75.00 – 18-21 ^{1/2}	60%-40% HIGH GUN
\$75.00 – 22-23 ^{1/2}	60%-40% HIGH GUN
\$75.00 – 24-25 ^{1/2}	60%-40% HIGH GUN
\$75.00 – 26-27	60%-40% HIGH GUN

\$1,000 KCTA GUN CLUB Added Money

Added to the Lewis Option Payout on the
W.F.J Fienup Memorial Handicap

BROWNING BT-99 SHOOT-OFF

3 Browning BT-99 Trap Guns will be Awarded

Entrants breaking any of the three Lewis scores will be eligible to shoot-off for a Browning BT-99 Trap Gun following Event 13. One gun will be awarded to the winner of each of the three shoot-offs. Shoot-offs will be 10 target rounds from Event 11 yardage.\$20.00

BROWNING

EVENT 12
50 TARGET HANDICAP

(Non Registered)

SHOT IMMEDIATELY FOLLOWING EVENT 11
SHOT AT YOUR ASSIGNED YARDAGE.

YARDAGE EARNED IN EVENT 11 DOES NOT APPLY TO THIS EVENT

Entry (Targets, Compulsory Purses and Tax) \$56.00

~ Purses included in entry ~

\$10.00 on the total (50%-30%-20%, ties divide)

\$20.00 by yardage group (50%-30%-20%, ties divide)

(18-20^{1/2}, 21-23^{1/2}, 24-26^{1/2}, 27)

\$10.00 Lewis, 4 divisions, one money each



GIPSON QUALITY FIREARMS
311 Mallard Lane • Sparta, IL 62286
816-547-4382
web: www.gipsonguns.com ~ www.gipsongunsonline.com
email: gipsonguns@yahoo.com

FRIDAY, MAY 17, 2013

Practice Traps open 8:00 a.m. ~ Program Starts at 9:00 a.m.

EVENT 13

100 16-YARD TARGETS

Entry: Targets and Trophies\$32.00
MTA Target Fee\$ 2.00

Options and trophies same as Event 7

EVENT 14

HALL OF FAME PRELIMINARY HANDICAP

100 HANDICAP TARGETS

Entry: Targets and Trophies\$32.00
HIGH GUN Guaranteed Purse.....\$20.00
MTA Target Fee\$ 2.00

\$1,250 HIGH GUN GUARANTEED PURSE

1st Place\$625.00
2nd Place.....\$375.00
3rd Place.....\$250.00

*For each 5 purse entries over 63, \$100.00 will be added beginning with 4th Place.
~ Not compulsory ~*

OPTIONS – SAME AS EVENT 11, EXCEPT NO ADDED LEWIS MONEY

\$2,000 ADDED MONEY - DONATED BY BOB BURG

\$400.00 – 18-20 ^{1/2}	50%-30%-20% High Gun
\$400.00 – 21-22 ^{1/2}	50%-30%-20% High Gun
\$400.00 – 23-24 ^{1/2}	50%-30%-20% High Gun
\$400.00 – 25-26 ^{1/2}	50%-30%-20% High Gun
\$400.00 – 27.....	50%-30%-20% High Gun

20 TROPHIES

- (2) Missouri Champion and Runner-up
- (2) Out-of-State Champion and Runner-up
- (4) Missouri 18-21^{1/2}, 22-23^{1/2}, 24-25^{1/2}, 26-27
- (4) Out-of-State 18-21^{1/2}, 22-23^{1/2}, 24-25^{1/2}, 26-27
- (7) Open– Lady I, Lady II, Sub-Junior, Junior, Junior Gold, Sub-Veteran and Veteran
- (1) George Herron Memorial Trophy to High Sr. Veteran (open)

MTA Annual Meeting will follow Event 15 shoot-offs

BROWNING BT-99 SHOOT-OFF

3 Browning BT-99 Trap Guns will be Awarded

Entrants breaking any of the three Lewis scores will be eligible to shoot-off for a Browning BT-99 Trap Gun following Event 15. One gun will be awarded to the winner of each of the three shoot-offs. Shoot-offs will be 10 target rounds from Event 14 yardage.\$20.00

BROWNING

EVENT 15 CLASS CHAMPIONSHIP DOUBLES

50 PAIR DOUBLES

Entry: Targets and Trophies\$32.00
 MTA Target Fee\$ 2.00

Class Options

\$5.00 each 25 pair –60%-40% (by Class).....\$10.00
 Total (50 pair) – 60%-40% (by Class)\$10.00
 4 Lewis Classes – 100%\$15.00
 Missouri Youth Lewis Option.....\$15.00
 \$7.50 of your entry will be used to further Youth Trapshooting. \$7.50 of each entry will be paid out in four Lewis Classes, 100%, ties divide.

OPEN – \$300.00 ADDED MONEY – BY MTA
Divided equally in six classes 60%-40%, High Gun

20 TROPHIES

- (6) Missouri AAA, AA, A, B, C, and D (ATA)
- (6) Out-of-State AAA, AA, A, B, C, and D
- (6) Out-of-State AAA-RU, AA-RU, A-RU, B-RU, C-RU, and D-RU
- (8) Open–Lady I, Lady II, Sub-Junior, Junior, Junior Gold, Sub-Veteran, Veteran, Sr. Veteran

MTA Annual Meeting will follow Event 14 shoot-offs



**OPEN
EVERY DAY
AT
11AM**

Willowes

BAR & GRILL

Located just 2 miles from the Gun Club on A-rd

The staff at Willowes would like to welcome you to our area. Our restaurant serves tender steaks, fresh seafood, hot sandwiches, and more. The food is homemade and the beer is ice-cold!

- Great Food
- Children's Menu
- Full Bar
- Happy Hour
- Keno
- Missouri Lottery

- ATM
- Pool Tables
- Darts
- Big Screen TVs
- Smoking & Non-Smoking



346-6197

SATURDAY, MAY 18, 2013

Practice Traps open 8:00 a.m. ~ Program starts at 9:00 a.m.

EVENT 16

MISSOURI SINGLES CHAMPIONSHIP

200 16-YARD TARGETS

Entry: Targets and Trophies	\$64.00
MTA Target Fee	\$ 4.00

Options

\$ 5.00 each 50 (4) – Open 100%	\$20.00
\$10.00 each 100 – 60%-40% (by Class)	\$20.00
Total 200 – 50%-30%-20% (by Class)	\$20.00
4 Lewis Classes – 100%	\$15.00
MO Youth Lewis Class	\$15.00

\$7.50 of your entry will be used to further Youth Trapshooting. \$7.50 of each entry will be paid out in four Lewis Classes, 100%, ties divide.

OPEN – \$1,000.00 ADDED MONEY – BY MTA

Divided equally in six classes 60%-40%, High Gun

95 TROPHIES

- (2) Missouri Champion (ATA) and Runner-up (ATA)
- (6) Missouri Class AAA, AA, A, B, C, and D
- (6) Missouri Class Runner-up AAA, AA, A, B, C, and D
- (2) Missouri Lady I (ATA) and Runner-up
- (2) Missouri Lady II (ATA) and Runner-up
- (3) Missouri Sub-Junior Champion (ATA), Runner-up and 3rd
- (3) Missouri Junior Champion (ATA), Runner-up and 3rd
- (2) Missouri Junior Gold (ATA) and Runner-up
- (2) Missouri Sub-Veteran (ATA) and Runner-up
- (2) Missouri Veteran (ATA) and Runner-up
- (2) Missouri Sr. Veteran (ATA) and Runner-up
- (5) Missouri State Team
- (5) Missouri Zone Team Champions
- (10) Missouri Junior High Team & Runner-up (8th grade and younger)
- (10) Missouri High School Team & Runner-up (9th grade and older)
- (2) Out-of-State Champion and Runner-up
- (6) Out-of-State Class AAA, AA, A, B, C, and D
- (6) Out-of-State Class Runner-up AAA, AA, A, B, C, and D
- (2) Out-of-State Lady I Champion and Runner-up
- (2) Out-of-State Lady II Champion and Runner-up
- (2) Out-of-State Sub-Junior Champion and Runner-up
- (2) Out-of-State Junior Champion and Runner-up
- (2) Out-of-State Junior Gold Champion and Runner-up
- (2) Out-of-State Sub-Veteran and Runner-up
- (2) Out-of-State Veteran and Runner-up
- (2) Out-of-State Sr. Veteran and Runner-up

MISSOURI SINGLES CHAMPIONSHIP

Champion will receive \$100.00, and Lady I, Lady II, Sub-Veteran, Veteran, Sr. Veteran, Sub-Junior, Junior and Junior Gold Champion will receive \$50.00 each if they compete in the Champion of Champions race at the GRAND AMERICAN. If they do not compete, the fund goes to the runner-up if they compete. If neither competes, the money reverts to the MTA.

MISSOURI SINGLES TEAM

The Missouri Team will be the State Singles Champion and Runner-up, and the three high scores of the 200 targets in Event 16 regardless of class. In case of ties, winner will be decided by shoot-off. Trophy to each shooter winning a place on the team.

HIGH SCHOOL & JUNIOR HIGH TEAM TROPHIES

Five trophies will be awarded to each winning team. All five team members must be from the same school or organization and must shoot together on the same squad. Teams must be entered with Tony Shockley prior to shooting Event 16.

SHAMROCK LEATHERS SUB-JR./JR. SHOOT OUT

A Shamrock Leathers 8 box shell bag to the winner of this shoot out. At the conclusion of Event 16, two numbers – one between 0-4, and one between 5-9, will be drawn at random. All Sub-Junior and Junior shooters breaking scores that end in either of the drawn numbers must check in within the allotted time to participate in the shoot out.

FRANK ENGLISH MEMORIAL TROPHY

Awarded to the High Missouri Sub-Junior or Junior shooter on the first 100 targets of Event 16. Donated in memory of Frank English by the Frank English Fund.

MISSOURI ZONE TEAM CHAMPIONS

Zone teams are comprised of the Zone Singles Champion and the four singles class winners from each zone shoot. These teams compete for the Zone Team Championship trophies during the Missouri Singles Championship. In the absence of any zone winner, the next high shooter will be on the team. Zone Directors are responsible for turning in their zone team roster.

Bob Schultz
TARGET SHOTGUNS, INC.

◆ *Caesar Guerini* ◆ *Silver Seitz*
◆ *Kolar* ◆ *Blaser*

Canterbury Voice Release and
“Target-Mizer” Token Systems

Bob Schultz
TARGET SHOTGUNS, INC.
105 Mitchell Drive • Hendersonville, NC 28792
800-684-6329
email: targetshotguns@aol.com

*beyond usual
perfection*



NOBELSPORTITALIA



The evolution of our components, their skilled combination along with the expertise during the whole manufacturing process allow us to offer you cartridges of excellent ballistic performance: **very fast** but **soft**, with a compact pattern at medium/long distance and **steady** in various climatic conditions.

Check out what's beyond the usual perfection!



the winning choice

Quail's Nest Inn & Suites

- Special Trapshoot Rate
- Motel Rooms with 1 King or 2 Queens
- Deluxe Two-Room Suites
- Complimentary Continental Breakfast
- Heated Indoor Pool and Hot Tub
- Walk to many Restaurants & the Outlets
- Free Wi-Fi



YOU CAN WALK TO THE PREMIUM OUTLET MALL

4644 Osage Beach Parkway • Osage Beach, MO 65065
573-348-2834 • 800-700-1006
www.quailsnest.com

TRAPSHOOTING ONLINE

Connecting Trapshooters
Around The World



THE TRAP APP

- Record Your Scores
- Calculate Averages
- and much more!



Interact with us during the shoot! Email or text your favorite pictures to photos@trapshootingonline.com and we'll share them on our website and Facebook page.



#thetrapapp

For more info visit:

www.trapshootingonline.com/thetrapapp



Robin's Resort

AT THE WATER'S EDGE

4935 ROBINS CIRCLE OSAGE • BEACH, MO 65065

1 Bedroom Condo Units: sleeps 2 — \$ 95.00 • 1 Bedroom Wedge Units: sleeps 3 — \$105.00
2 Bedroom Condo Units: sleeps 3 — \$115.00 • 3 Bedroom Condo Units: sleeps 4 — \$135.00
House: Sleeps 6 — \$150.00 • Additional Units are available ranging between \$80.00-\$100.00

ADDITIONAL DISCOUNTS ARE AVAILABLE FOR LONGER STAYS

ROGER & MAGS LANGPAUL, OWNERS

4935 Robins Circle ~ Osage Beach, MO 65065

573-348-2275

email: info@robinsresort.net • website: www.robinsresort.net

3 Ways To Shop



Call * Click * Come In

573-581-9777 800-531-2666

www.grafs.com

Graf's Reloading Super Center • 4132 S Clark St - Graf & Sons, Inc • 4050 S Clark - Mexico, MO

We have the powder for you



IMR
LEGENDARY POWDERS



HODGDON
THE BRAND THAT'S TRUE



VIHTAVUORI OY



WINCHESTER



When Shipping, Haz Mat Fee Applies

Cheddite 209 Primers

When You Want Accuracy

The Best 209 Primer In The World!



Call For Current Pricing!



When Shipping,
Haz Mat Fee Applies



EVENT 17 THE DIRECTOR'S HANDICAP

100 HANDICAP TARGETS

Entry: Targets and Trophies	\$32.00
HIGH GUN Guaranteed Purse.....	\$20.00
MTA Target Fee	\$ 2.00

\$1,250 HIGH GUN GUARANTEED PURSE

1st Place	\$625.00
2nd Place.....	\$375.00
3rd Place.....	\$250.00

**For each 5 purse entries over 63, \$100.00 will be added beginning with 4th Place.
~ Not compulsory ~**

OPTIONS & TROPHIES – SAME AS EVENT 8

\$1,400.00 ADDED MONEY

Donated by MTA Officers, Directors and Management

\$280.00 – 18-20 ^{1/2}	50%-30%-20%	High Gun
\$280.00 – 21-22 ^{1/2}	50%-30%-20%	High Gun
\$280.00 – 23-24 ^{1/2}	50%-30%-20%	High Gun
\$280.00 – 25-26 ^{1/2}	50%-30%-20%	High Gun
\$280.00 – 27	50%-30%-20%	High Gun

2013 ATA STATE SHOOT BUCKLE AWARD

**ONE (1) BELT BUCKLE
AND A SUM OF \$500
WILL BE PROVIDED TO EACH
ATA STATE/PROVINCIAL SHOOT.**

The buckle goes to the Resident Champion of event 17, the Director's Handicap.

The \$500 will be split 50-30-20 High Gun to the top three resident shooters in event 17. The belt buckle winner will be eligible for another belt buckle at this year's Grand American. This buckle will be awarded to the high eligible shooter (belt buckle winners from around the country) in the President Allan Radway Handicap event on Tuesday. This buckle winner will also receive \$1,000.

Wild Turkey Creek Ranch
Wilderness Retreat

LAKE OF THE OZARKS

Available for Weekend or Weekly Rental
 2 bedroom, 1 bath, 1200 sq. ft. cabin, sleep 6 plus. Sits on 30 acres, nestled in a quiet valley with flowing creek off back deck.

- 5 miles to Gun Club • 3 miles to Deere Creek Golf Course
- 3 miles to Willows Bar and Grill • 12 miles to Camdenon

Also Available for Rent
 25' 2003 Outback Camper with 2 slide-outs. Sleeps up to 6 with all the comforts of home. We will set up at the MTA grounds subject to availability, and come get it when you're done.

Contact:
 Tracy Eichler for more information, rates and availability

573-216-5218
 email: tneichler@sbcglobal.net

(High Clearance Vehicle recommended for access to cabin)

Quality RV

Making Your Camping Experience Better Since 1977!

YOUR LOCAL RV SUPERSTORE
 Only 15 minutes from the Gun Club on Highway 54
 Huge parts store.
 Full Service Center, with service calls available.
 Large selection of New & Used RV's in stock from brands like:

**JAYCO • SALEM
 CEDAR CREEK • SILVERBACK
 MOBILE SUITES • VENGEANCE**

**Trading is Welcomed ~ Family Owned & Operated
 No Pressure Sales**

View all of our inventory online 24 hours a day at
www.qualityrv.net

Phone 573-317-1001 or 877-317-1001

SUNDAY, MAY 19, 2013

Practice Traps open 8:00 a.m. ~ Program starts at 9:00 a.m.

EVENT 18

MISSOURI DOUBLES CHAMPIONSHIP

50 PAIR DOUBLES

Entry: Targets and Trophies	\$32.00
MTA Target Fee	\$ 2.00

Class Options

\$5.00 each 25 pair –60%-40% (by Class).....	\$10.00
Total (50 pair) – 60%-40% (by Class)	\$10.00
4 Lewis Classes – 100%	\$15.00
Missouri Youth Lewis Option.....	\$15.00

\$7.50 of your entry will be used to further Youth Trapshooting.
\$7.50 of each entry will be paid out in four Lewis Classes, 100%, ties divide.

**\$500.00 OPEN ADDED MONEY
DONATED BY GATEWAY GUN CLUB**
Divided equally in six classes 60%-40%, High Gun

\$100.00 TO MISSOURI CHAMPION

(Not eligible for added money by Class)

60 TROPHIES

- (2) Missouri Champion (ATA) and Runner-up (ATA)
- (6) Missouri Class AAA, AA, A, B, C, and D Champion
- (6) Missouri Class Runner-up AAA, AA, A, B, C, and D
- (2) Missouri Lady I Champion and Runner-up
- (2) Missouri Lady II Champion and Runner-up
- (2) Missouri Sub-Junior Champion and Runner-up
- (2) Missouri Junior Champion and Runner-up
- (2) Missouri Junior Gold Champion and Runner-up
- (2) Missouri Sub-Veteran Champion and Runner-up
- (2) Missouri Veteran Champion and Runner-up
- (2) Missouri Senior Veteran Champion and Runner-up
- (2) Out-of-State Champion and Runner-up
- (6) Out-of State Class AAA, AA, A, B, C and D Champion
- (6) Out-of State Class Runner-up AAA, AA, A, B, C and D
- (2) Out-of-State Lady I Champion and Runner-up
- (2) Out-of-State Lady II Champion and Runner-up
- (2) Out-of-State Junior Gold Champion and Runner-up
- (2) Out-of-State Sub-Veteran Champion and Runner-up
- (2) Out-of-State Sub-Junior Champion & Runner-up
- (2) Out-of-State Junior Champion & Runner-up
- (2) Out-of-State Veteran Champion and Runner-up
- (2) Out-of-State Senior Veteran Champion and Runner-up

DAVID DOVE MEMORIAL

Missouri Junior & Sub-Junior Champion will receive MTA Life Memberships
(or value if already a Life Member)

Donated by David Dove Memorial Youth Fund

EVENT 19

MISSOURI HANDICAP CHAMPIONSHIP

100 HANDICAP TARGETS

Entry: Targets and Trophies	\$32.00
HIGH GUN Guaranteed Purse.....	\$25.00
MTA Target Fee	\$ 2.00

\$2,000 HIGH GUN GUARANTEED PURSE

1st Place	\$1,200.00
2nd Place.....	\$ 600.00
3rd Place.....	\$ 200.00

**For each 6 purse entries over 80, \$150.00 will be added beginning with 4th Place.
~ Not compulsory ~**

Options

\$ 5.00 on each 25 – 100%	\$20.00
\$10.00 on each 50 (3) – 50%-30%-20%	\$30.00
4 Lewis Classes – 100%	\$15.00
4 Yardage Groups – 50%-30%-20%	\$12.00

*Each group shoots for its own money.
Groups 18-21^{1/2}, 22-23^{1/2}, 24-25^{1/2}, 26-27*

Jackpot Purse (30%-20%-15%-13%-12%-10%)	\$50.00
Missouri Youth Lewis Class	\$15.00
ATA Hall of Fame Lewis Class.....	\$20.00

MISSOURI YOUTH LEWIS CLASS

\$7.50 of your entry will be used to further Youth Trapshooting.

\$7.50 of each entry will be paid out in four Lewis Classes, 100%, ties divide.

ATA HALL OF FAME CONTRIBUTOR AWARD CHAMPIONSHIP – LEWIS CLASS

\$10.00 Donated to ATA Hall of Fame. \$10.00 paid out to 4 Lewis Classes 100% each. Champion receives Hall of Fame Handicap Trophy courtesy of Shamrock Leather, ties broken by reverse score. Champion will receive \$50.00 if competing in the Hall of Fame Champion of Champions event during the Grand American Handicap.

\$1,000

Gipson Ricketts, LLC

Gipson Guns, LLC

Added Money

Added to the Lewis Option Payout on the Handicap Championship

OPEN – \$1,600.00 ADDED MONEY – BY MTA

\$400.00 – 18-21 ^{1/2}	50%-30%-20% High Gun
\$400.00 – 22-23 ^{1/2}	50%-30%-20% High Gun
\$400.00 – 24-25 ^{1/2}	50%-30%-20% High Gun
\$400.00 – 26-27	50%-30%-20% High Gun

\$300.00 TO MISSOURI CHAMPION

(Not eligible for MTA Added Yardage Money)

46 TROPHIES

- (2) Missouri Champion (ATA) and Runner-up (ATA)
- (4) Missouri 3rd through 6th (ATA)
- (2) Missouri Lady I Champion and Runner-up
- (2) Missouri Lady II Champion and Runner-up
- (3) Missouri Sub-Junior Champion, Runner-up and 3rd
- (3) Missouri Junior Champion, Runner-up and 3rd
- (2) Missouri Junior Gold Champion and Runner-up
- (2) Missouri Sub-Veteran Champion and Runner-up
- (2) Missouri Veteran Champion and Runner-up
- (2) Missouri Sr. Veteran Champion and Runner-up
- (2) Out-of-State Champion and Runner-up
- (4) Out-of-State 3rd through 6th
- (2) Out-of-State Lady I Champion and Runner-up
- (2) Out-of-State Lady II Champion and Runner-up
- (2) Out-of-State Sub-Junior Champion and Runner-up
- (2) Out-of-State Junior Champion and Runner-up
- (2) Out-of-State Junior Gold Champion and Runner-up
- (2) Out-of-State Sub-Veteran Champion and Runner-up
- (2) Out-of-State Veteran Champion and Runner-up
- (2) Out-of-State Sr. Veteran Champion and Runner-up

HIGH OVERALL

EVENTS 7-11, 14-16, 18-19

1,200 TARGETS

Class determined by Event 7

(A shooter may win only one of the High Overall trophies)

32 TROPHIES

- (2) Missouri Champion and Runner-up
- (2) Out-of-State Champion and Runner-up
- (6) Missouri Classes AAA, AA, A, B, C, and D
- (6) Out-of-State Classes AAA, AA, A, B, C, and D
- (2) Missouri and Out-of-State Lady I
- (2) Missouri and Out-of-State Lady II
- (2) Missouri and Out-of-State Sub-Junior
- (2) Missouri and Out-of-State Junior
- (2) Missouri and Out-of-State Junior Gold
- (2) Missouri and Out-of-State Sub-Veteran
- (2) Missouri and Out-of-State Veteran
- (2) Missouri and Out-of-State Senior Veteran

INDIANA GUN CLUB

TRAP - SKEET - SPORTING CLAY FACILITY

14926 E. 113th Street • Fortville, IN 46040 • 317-485-6540

Men & women of all ages
—
enjoy this outdoor experience —
Consider a gift certificate!

GROUP OUTINGS!

*Any size group. We furnish
instruction, shotguns, hearing
protection and ammunition.
Call for details.*

VISIT OUR CLUB:

- ▶ Clubhouse with Full Service Pro Shop
- ▶ New & Used Shotgun Sales
- ▶ Reloading Components
- ▶ Browning Dealer — Gun Safes, Clothing & Accessories
- ▶ Browning Pro-Staff Instructor On-Site
- ▶ Free Beginner Lessons Offered Monthly
- ▶ Private or Group Shooting Instruction
- ▶ Gun Fitting
- ▶ Upland Bird Hunting

OPEN TO THE PUBLIC

Wednesday: 10am-9pm

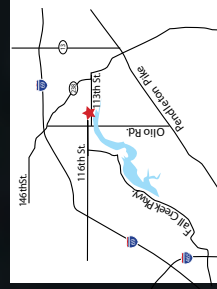
Friday: noon-6pm

Saturday & Sunday 10am-6pm

Shotgun Only Facility

SCTP — Scholastic Clay Target
Program — Clay Target Program

*Giving kids a sense of teamwork,
competition, confidence.*



KOLAR SBK SHOTGUNS CAESAR GUERINI PERAZZI KRIEGHOFF BROWNING WINCHESTER REMINGTON

LAKE OF THE OZARKS

5885 Osage Beach Parkway ~ Osage Beach, Missouri 65065

573-348-9555 • fax: 573-348-6538



BY CHOICE HOTELS

800.4 CHOICE
choicehotels.com



ACCOMMODATIONS/FEATURES

- King Rooms with Recliners and Microwaves
- Free USA Today
- Free local calls
- Guest Laundry
- Specialty Rooms
- King Room with Whirlpool Tub
- Microwaves in Specialty Room
- Remote Control Cable TV with 80 channels including HBO
- Free Hot Breakfast
- Tour Bus Parking
- 32" Flat Screen TV
- Large Outdoor Heated Pool
- Rooms have Hard-wired or Wireless High-Speed Internet
- Business Center in Lobby
- Pillow-Top Mattresses
- Indoor Heated Pool
- Indoor Hot Tub & Sauna
- Fax & Copy Service Available
- All rooms equipped with in-room Coffee Makers, Iron & Ironing Boards, Refrigerators, Hair Dryers and Clock Radios
- All Rooms Non-Smoking
- No Pets

**Ask for Special
Trapshoot Rate**

AREA ATTRACTIONS

- Osage beach Premium Outlet Mall (3 mi)
- Big Surf Water Park (3.5 mi)
- Music Show (nearby)
- 2 State Parks (nearby)
- Pirates Cove Mini-Golf (nearby)
- Many Restaurants (nearby)
- Hospital (nearby)
- Public Beach & Boat Launch (nearby)
- Several Golf Courses (nearby)

Check Out Our Virtual Tour
www.choicehotels.com/hotel/mo606

HIGH ALL-AROUND

EVENTS 16, 18 & 19

400 TARGETS

Class determined by Event 16

(A shooter may win only one of the High All Around trophies)

32 TROPHIES

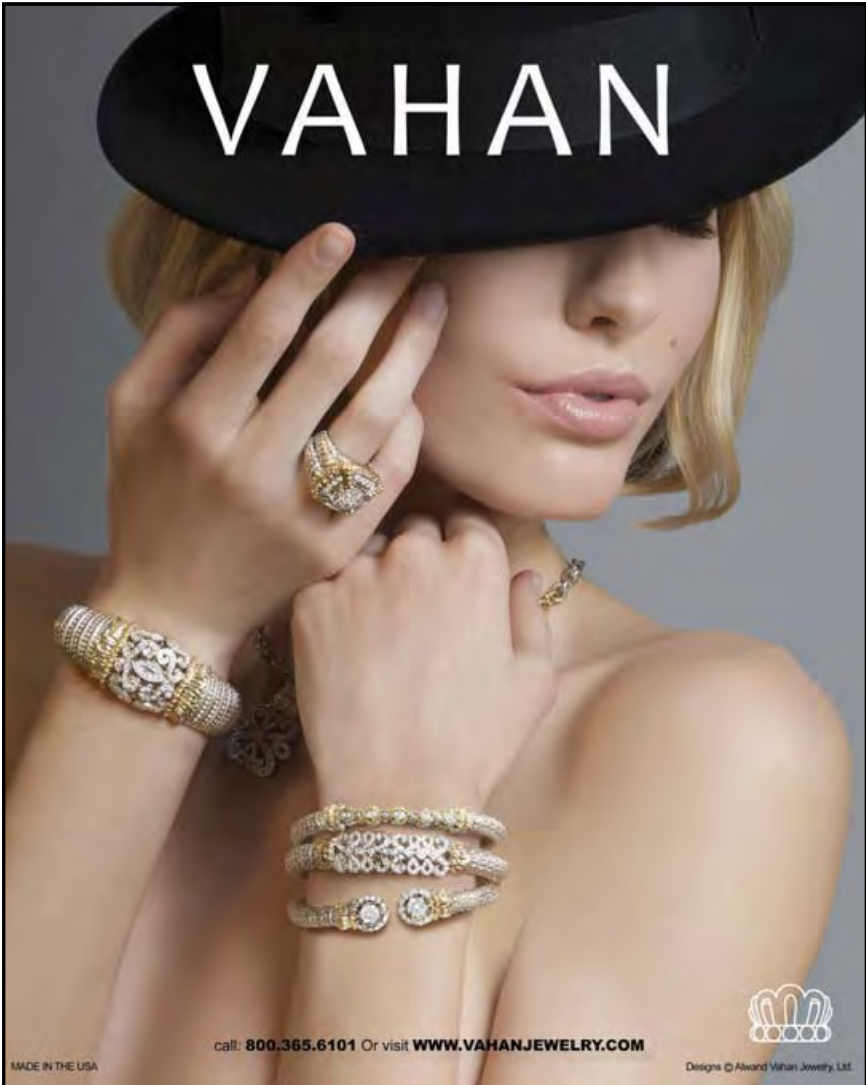
- (2) Missouri Champion (ATA) and Runner-up
- (2) Out-of-State Champion and Runner-up
- (6) Missouri Classes AAA, AA, A, B, C, and D – Belt Buckles
- (6) Out-of-State Classes AAA, AA, A, B, C, and D – Belt Buckles
- (2) Missouri and Out-of-State Lady I
- (2) Missouri and Out-of-State Lady II
- (2) Missouri and Out-of-State Sub-Junior
- (2) Missouri and Out-of-State Junior
- (2) Missouri and Out-of-State Junior Gold
- (2) Missouri and Out-of-State Sub-Veteran
- (2) Missouri and Out-of-State Veteran
- (2) Missouri and Out-of-State Senior Veteran

SPECIAL MULTI-EVENT TROPHIES

9 TROPHIES

- (1) Bill Lyons Memorial Trophy – High Missouri Lady, Events 7-11, 13-19, donated by Beth Teegarden.
- (1) Barbara Frederick Trophy – High Missouri Lady, Events 11, 15 & 19, donated by Robert L. Burg.
- (1) Betty Ann Foxworthy Trophy – High Out-of-State Lady, Events 7-11, 13-19, donated by Bob Burg.
- (1) Harriet Siegler Memorial Trophy – High Missouri Lady, Events 16, 18 & 19, donated by Bob Burg.
- (1) Lela Hall Frank Memorial Trophy – High Out-of-State Lady, Events 16, 18 & 19, donated by Bob Burg.
- (1) Joe Clements Memorial Trophy – High Missouri Sr. Veteran, Events 11, 15 & 19 donated by Bob Burg.
- (1) Larry Cox Memorial Trophy – High Missouri Veteran, Events 11, 15 & 19 donated by Bob Burg.
- (1) W.F.J. Fienup Trophy – High Missouri shooter, Events 16 & 19 donated by MTA.
- (1) Ray Fienup Trophy – High Missouri Junior, Events 16 & 19, donated by Foundation for the Junior Trapshooters of Missouri, Inc.

VAHAN



call: 800.365.6101 Or visit WWW.VAHANJEWELRY.COM

MADE IN THE USA



Designs © Award Vahan Jewelry, Ltd.



4050 Osage Beach Parkway
Osage Beach, MO 65065
573.348.3332 • Mon.-Sat. 9 a.m.-6 p.m.
WWW.DUNCAN2JEWELRY.COM

PAST MISSOURI CHAMPIONS

ALL - AROUND

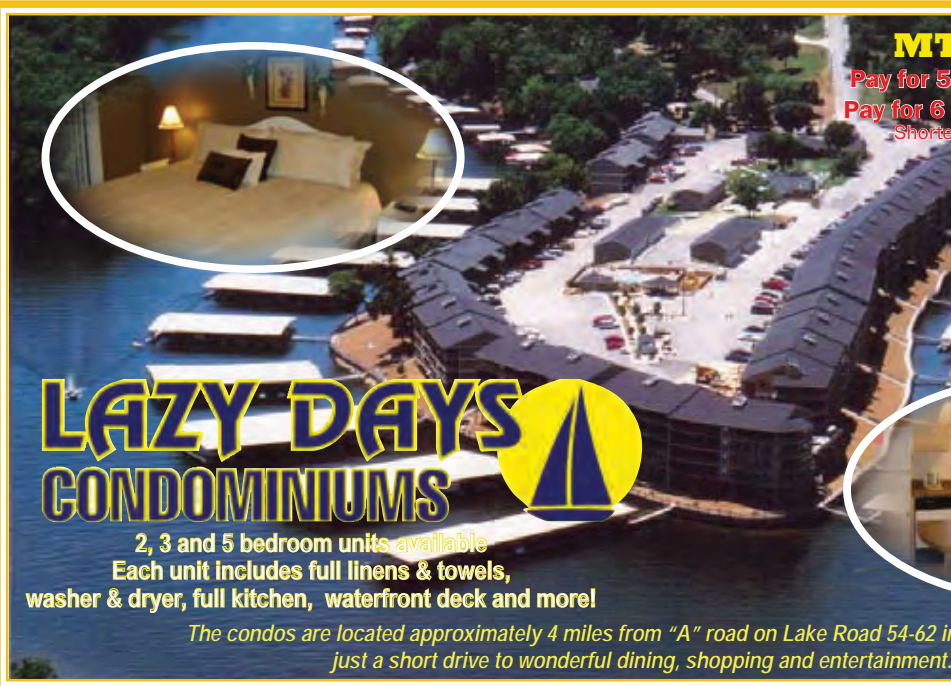
1928	I.M. Carroll	469x550	1972	Karrol Hillebrand	390
1929	B.M. Crawford	321-350	1973	Steve Carmichael	390
1930	O.B. Scott	318	1974	Eddie Schneider	390
1931	O.B. Franz	333	1975	Steve Carmichael	391
1932	O.B. Franz	327	1976	Eddie Schneider	392
1933	O.B. Franz	331	1977	Leo Harrison III	388
1934	R. Elliot	325	1978	Steve Carmichael	393
1935	R. Elliot	366x400	1979	Eddie Schneider	391
1936	R. Elliot	366	1980	J.D. Overstreet	391
1937	O.B. Franz	378	1981	Vic Baker	381
1938	D.G. Henry	375	1982	Leo Harrison III	396
1939	O.B. Franz	373	1983	Leo Harrison III	389
1940	R. Fienup	377	1984	Leo Harrison III	388
1941	T.J. Frakes	377	1985	Gary Goodpaster	385
1942	O.B. Franz	381	1986	Leo Harrison III	386
1943	C.E. Brambie	382	1987	Leo Harrison III	391
1946	Phil Miller	384	1988	M.L. McGuire	390
1947	J.T. Frakes	386	1989	Leo Harrison III	388
1948	E. Jelly	384	1990	J.D. Overstreet	386
1949	Col. J.L. Hall	378	1991	Leo Harrison III	394
1950	J. Broughton	387	1992	Leo Harrison III	391
1951	R. Anderson	382	1993	Jesse Hamblen	392
1952	Earl Roth	366	1994	Leo Harrison III	393
1953	Earl Roth	372	1995	Leo Harrison III	397
1954	Chas. Surbaugh	369	1996	Leo Harrison III	390
1955	J. Broughton	378	1997	Leo Harrison III	395
1956	O.S. Anderson	385	1998	Leo Harrison III	392
1957	M.E. Wolfenbarger	375	1999	Leo Harrison III	395
1958	M.E. Wolfenbarger	377	2000	Leo Harrison III	394
1959	J. Broughton	380	2001	Leo Harrison III	397
1960	J.D. Overstreet	380	2002	Leo Harrison III	394
1961	J.D. Overstreet	376	2003	Leo Harrison III	396
1962	C.E. Barnhart	390	2004	Leo Harrison III	394
1963	M.E. Wolfenbarger	381	2005	Larry McKinley	394
1964	H. Rasmussen	378	2006	Ron Carneal	391
1965	C.E. Barnhart	392	2007	Leo Harrison III	397
1966	C.E. Barnhart	391	2008	Leo Harrison III	394
1967	C.E. Barnhart	383	2009	Leo Harrison III	392
1968	J. Boulware	384	2010	Leo Harrison III	396
1969	Mike Hampton	386	2011	David Williams	383
1970	Ronnie Hampton	395	2012	Leo Harrison III	394
1971	Myron Willoughby	382			

MEN'S SINGLES

1928 I.M. Carroll..... 186	1972 Mark Hampton 200
1929 J.R.Elliot..... 189	1973 Larry McKinley..... 200
1930 W.W. Bradbury 186	1974 Virgil Pitman 200
1931 F.F. Wilmas 195	1975 John Henderson 200
1932 G.W. Jewett 195	1976 Larry McKinley..... 200
1933 Dan Zimmer 195	1977 Karroll Hillebrand 199
1934 Amos Joe 196	1978 Neil Butteiger 200
1935 O.B. Franz 193	1979 Tom Edlin 200
1936 Butch Allen..... 195	1980 Leo Harrison III..... 199
1937 Russ Elliot 197	1981 M.L. McGuire..... 199
1938 D.G. Henry 198	1982 Leo Harrison III..... 200
1939 D.G. Henry 199	1983 Richard Bowen..... 200
1940 D.G. Henry 190	1984 Leo Harrison III..... 200
1941 J.T. Frakes..... 197	1985 Glen Shank 199
1942 H.M. Schick..... 199	1986 Leo Harrison III..... 199
1943 C.H. Ehler..... 198	1987 Leo Harrison III..... 200
1946 W.R.J. Fienup 199	1988 M.L. McGuire..... 200
1947 D.G. Henry 198	1989 J.D. Overstreet..... 199
1948 A.W. Mustion 199	1990 Eddie Schneider..... 199
1949 Col. Jas. R. Hall..... 197	1991 Leo Harrison III..... 200
1950 Earl Roth 199	1992 Mike Bishop 200
1951 J.T. Frakes..... 198	1993 Leo Harrison III..... 200
1952 Earl Roth 192	1994 Leo Harrison III..... 200
1953 Ernest Jelly 196	1995 Leo Harrison III..... 199
1954 Ingles Ferry..... 197	1996 M.L. McGuire..... 199
1955 H.W. Weigman 199	1997 Ronald Elsenberg 200
1956 M.E. Wolfenbarger 199	1998 Leo Harrison III..... 200
1957 M.E. Wolfenbarger 196	1999 Leo Harrison III..... 200
1958 M.E. Wolfenbarger 199	2000 Ronald Elsenberg 200
1959 John Broughton 198	2001 Leo Harrison III..... 200
1960 Pete Bellington 194	2002 Leo Harrison III..... 200
1961 C.E. Barnhart..... 199	2003 Karroll Hillebrand 200
1962 C.E. Barnhart..... 200	2004 Leo Harrison III..... 200
1963 C.E. Barnhart..... 199	2005 Leo Harrison III..... 200
1964 Myron Willoughby 197	2006 Eric Harvey..... 200
1965 J. Henderson 200	2007 Leo Harrison III..... 200
1966 Ed Berry 200	2008 Leo Harrison III..... 200
1967 Virgil Pitman 199	2009 Leo Harrison III..... 200
1968 Bill Lyons 199	2010 Dennis Alkire..... 200
1969 Virgil Pitman 200	2011 M.L. Mcguire 198
1970 Terry Patterson 200	2012 Jon B. Messbarger 200
1971 Mark Hampton 199	

WOMEN'S SINGLES

1928 Jane Mustom56	1972 Nancy Senkevech194
1929 Lela Hall80	1973 Barbara Frederick194
1930 J.M. Scott.....194	1974 Nancy Senkevech195
1931 J.M. Scott.....86	1975 Nancy Senkevech199
1932 Lela Hall90	1976 Barbara Frederick195
1933 Lela Hall94	1977 Barbara Frederick193
1934 Lela Hall189	1978 Barbara Frederick195
1935 Lela Hall193	1979 Barbara Frederick198
1936 Lela Hall192	1980 Barbara Frederick192
1937 Lela Hall196	1981 Carol Goforth191
1938 Lela Hall191	1982 Carol Goforth194
1939 Lela Hall194	1983 Carol Goforth197
1940 Lela Hall95	1984 Barbara Frederick199
1941 Marie Hill91	1985 Barbara Frederick198
1942 Lela Hall93	1986 Cindy Essner198
1943 Lela Hall96	1987 Norma Law193
1946 Doris Bash81	1988 Norma Law188
1947 Marie Golden.....187	1989 Lulu Fairchild185
1948 Marie Golden.....183	1990 Charlene Bauman190
1949 S. Biechele.....93	1991 Sandy Butteiger191
1950 S. Biechele.....91	1992 Norma Law192
1951 Mimi Cates92	1993 Tenessa Hansen194
1952 Doris Bash74	1994 Tenessa Hansen195
1953 Lela Surbaugh.....85	1995 Tenessa Hansen191
1954 S. Biechele.....92	1996 Tenessa Hansen193
1955 S. Biechele.....98	1997 Barbara Frederick188
1956 D. Eversmeyer79	1998 Barbara Frederick193
1957 Jane Branon75	1999 Alisa Hilker195
1958 Jane Branon85	2000 Linda Nelson198
1959 Lela Surbaugh.....91	2001 Tenessa Hansen195
1960 Estell Heiter85	2002 Kathryn Mosbey192
1961 Cynthia Gillum93	2003 Goldie Pippin195
1962 C.Greenblatt90	2004 Marietta Rager200
1963 B. Bradley.....88	2005 Goldie Pippin194
1964 Judy Cox85	2006 Beth Teegarden193
1965 Lela Surbaugh.....89	2007 Rachel Hopkins195
1966 Pat Lowery95	2008 Rachel Hopkins198
1967 Helen Garret94	2009 Rachel Hopkins196
1968 Helen Garret96	2010 Rachel Hopkins197
1969 Helen Garret194	2011 Beth Teegarden191
1970 Barbara Frederick199	2012 Rachel Hopkins199
1971 Helen Garret191	



MT
Pay for 5
Pay for 6
Shorter

LAZY DAYS CONDOMINIUMS



2, 3 and 5 bedroom units available
Each unit includes full linens & towels,
washer & dryer, full kitchen, waterfront deck and more!

*The condos are located approximately 4 miles from "A" road on Lake Road 54-62 in
just a short drive to wonderful dining, shopping and entertainment.*

Get the shooter's edge.

Decot Hy-Wyd Sport Glasses sets the standard for sports eye wear.

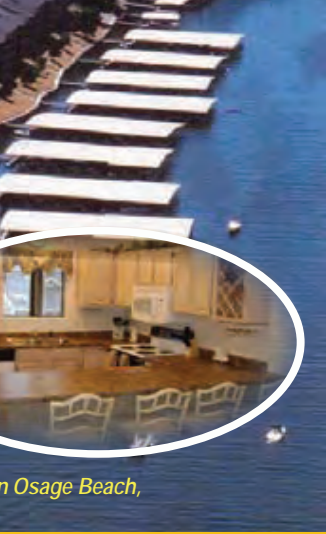
- Prescription or nonprescription
- Custom handcrafted frame of high quality spring metal
- Designed to set high or low, away from the face to eliminate perspiration smear
- 40+ lens colors for ultimate target contrast



Call 1-800-528-1901 | Order online www.sportglasses.com | E-mail decot@sportglasses.com

ATA SPECIAL

3 nights, get 1 night free
5 nights, get 2 nights free
or stay discounts available



Osage Beach,



Check in/out at
Al Elam Vacation Rentals

located at
2866 Bagnell Dam Blvd.
Lake Ozark, MO 65049

Call toll free at:

877-303-1968

e-mail: rentals@alelam.com

Choice of the ATA Official Supplier of Traps at the Grand American

- More registered targets are thrown from Pat-Traps than any other automatic trap machine!
- The Automatic Double and Automatic Wobble have a four case turret (540 targets).
- Switch from Singles to Doubles in Seconds.
- Also available Skeet and Wobble Skeet with a five case turret (575) targets.



Pat-Trap – N.E. & Canada
(630) 428-3395
Golden West Industries – West Coast
(800) 548-5444 or (818) 365-3946

Gene Seare Supply – South Central
(405) 262-2647
C.A.C. Associates, Inc. – Mid-Atlantic
(814) 472-4430

Metro Gun Club – North Central
(763) 786-5630

P
A
T
-
T
R
A
P

®



SHOTSHELL RELOADERS

An Employee-Owned Company

***“MEC Shotshell Reloaders keep me
on top of my shooting game.
I choose MEC to reload.”***

-Shari LeGate

3 Time National Champion—Olympic Skeet & Double Trap,
World Champion, World Cup Medalist,
2 Time All Around Shotgun Champion



800.797.4632 | www.mecreloaders.com
800 Horicon Street, Suite 1 | Mayville, WI 53050

JUNIOR SINGLES

1928 Unknown	1972 Leo Harrison III.....200
1929 Unknown	1973 Leo Harrison III.....196
1930 Unknown	1974 Leo Harrison III.....195
1931 Unknown	1975 Leo Harrison III.....199
1932 Unknown	1976 Sandy Butteiger.....193
1933 Unknown	1977 Jeff Keyser.....190
1934 Unknown	1978 Chris Frick.....194
1935 Unknown	1979 Gary Edlin.....198
1936 Ray Fienup63x100	1980 Ken Grafts.....193
1937 Ray Fienup96	1981 Troy Scotten.....194
1938 Ray Fienup90	1982 Todd Overstreet.....191
1939 Ray Fienup98	1983 Jimmy Miller.....189
1940 Bill Wyeth.....94	1984 Jimmy Miller.....190
1941 D. Elliot.....75	1985 Ron Wayland.....194
1942 J. Steppleman.....97	1986 Charles Carter.....186
1943 J. Steppleman.....93	1987 Ron Wayland.....193
1946 John Harlan.....95	1988 Rusty Jeffries.....193
1947 J. Steppleman.....90	1989 Donald Buchhelt, Jr.....194
1948 J. Steppleman.....92	1990 Brice Chapman.....190
1949 Jim Mankin.....95	1991 Frank English.....194
1950 J. Steppleman.....90	1992 Kevin Cokerham.....198
1951 R. Anderson.....99	1993 Kevin Cokerham.....197
1952 Unknown	1994 Carson Lay.....198
1953 Unknown	1995 Carson Lay.....187
1954 Jerry Lee Winn.....90	1996 John Dawdy.....185
1955 Steve Dowdy.....92	1997 Seth Inman.....197
1956 J.D. Overstreet.....96	1998 Seth Inman.....192
1957 Jackie Lasater.....94	1999 Seth Inman.....195
1958 Unknown	2000 Jordan Holmes.....196
1959 Kevin Onka.....96	2001 Doug Myers.....195
1960 Kevin Onka.....98	2002 Cody Renkoski.....196
1961 M.G. Michael.....97	2003 Kyle Hanna.....199
1962 Steve Ward.....94	2004 Eric Harvey.....200
1963 Steve Carmichael.....97	2005 Alex Perret.....196
1964 D. Burnett.....97	2006 Dennis Roper.....197
1965 Poggemoller.....96	2007 Croix Sterling.....200
1966 Ross Macleod.....99	2008 John Battles.....199
1967 M. McCarthy.....97	2009 John Battles.....199
1968 Kim Hieman.....98	2010 Bryce Haffecke.....199
1969 Don Tracy.....98	2011 Lee Rucker.....196
1970 Bradley Lyons.....194	2012 Lee Rucker.....199
1971 Mark Hampton.....199	

SHOOTER STUFF

**MADE
IN THE USA**

**EMBROIDERY
AVAILABLE**

**PADDED SHOOTING
TEE'S FOR TRAP,
SKEET, SPORTING CLAYS,
HUNTING – SHORT & LONG SLEEVES,
RIGHT OR LEFT HAND.**

**SIZES UP
TO 3X IN
STOCK**

shooter
stuff.com

Mary & Jesse Bowles

479.925.3985

**WWW.SHOOTERSTUFF.COM
SHOOTERSTUFF@GMAIL.COM**

The Golf Club at

Deer Chase

*The Newest
Championship Golf Course
at the Lake of the Ozarks...*

minutes away from the MTA Gun Club



~ Trapshooter's Special ~

Show your ATA card and receive 20% off anytime...
weekdays & weekends during the shoot!

Call: 573-346-6117

Toll Free: 866-633-3771

The Golf Club at Deer Chase

770 Deere Chase Road, Linn Creek, MO 65052

www.deerchasegolf.com

We are conveniently located in the Auglaize River Valley between Camdenton and Osage Beach. From Hwy. 54, turn on Hwy. A for 3.4 miles; then right on Lowell Williams Rd. for 1.5 miles. Deer Chase is on the left.

DOUBLES

1928 E.S. Stofer41x50	1972 Karroll Hillebrand98
1929 B.M. Crawford42	1973 Eddie Schneider.....95
1930 J.L. Kleeschulte45	1974 Steve Carmichael.....96
1931 O.B. Franz47	1975 Steve Carmichael.....97
1932 O.B. Franz45	1976 Don Allen98
1933 Dan Zimmer45	1977 C.E. Barnhart.....98
1934 O.B. Franz46	1978 Steve Carmichael.....98
1935 Russ Elliot88x100	1979 Jim Boulware.....99
1936 Dr. M.E. Hagerty89	1980 Eddie Schneider.....99
1937 Russ Elliot94	1981 Vic Baker.....98
1938 L.J. Montague.....90	1982 Leo Harrison III.....99
1939 Russ Elliot93	1983 J.D. Overstreet.....96
1940 O.B. Franz92	1984 J.D. Overstreet.....100
1941 Russ Elliot93	1985 Larry McKinley.....96
1942 Ray Fienup95	1986 M.L. McGuire.....99
1943 Ray Fienup96	1987 Leo Harrison III.....97
1946 C.J. Moss95	1988 Larry McKinley.....98
1947 W.F.J. Fienup.....98	1989 Charles Baker98
1948 Ernest Jelly96	1990 Ron Hedrick98
1949 Howard Schick91	1991 M.L. McGuire.....98
1950 John A. Broughton.....97	1992 Leo Harrison III.....99
1951 F.L. Steppleman.....94	1993 David Dove.....98
1952 Earl Roth91	1994 Leo Harrison III.....98
1953 Earl Roth92	1995 Leo Harrison III.....98
1954 Charles Surbaugh91	1996 Leo Harrison III.....199
1955 John Broughton86	1997 Leo Harrison III.....100
1956 John Broughton95	1998 Leo Harrison III.....100
1957 Billy Mitchell93	1999 Leo Harrison III.....99
1958 M.E. Wolfenbarger89	2000 Leo Harrison III.....100
1959 J.D. Overstreet.....92	2001` Leo Harrison III.....100
1960 O.S. Anderson94	2002 Layne Matthiesen100
1961 J.A. Broughton90	2003 Leo Harrison III.....99
1962 J.D. Overstreet.....99	2004 Leo Harrison III.....100
1963 C.E. Barnhart.....95	2005 Leo Harrison III.....100
1964 Pete Bellington95	2006 Leo Harrison III.....100
1965 C.E. Barnhart.....98	2007 Leo Harrison III.....100
1966 C.E. Barnhart.....98	2008 Leo Harrison III.....99
1967 C.E. Barnhart.....97	2009 Rachel Hopkins98
1968 Myron Willoughby96	2010 Leo Harrison III.....100
1969 C.E. Barnhart.....97	2011 Elijah Bridges98
1970 Ronnie Hampton98	2012 Leo Harrison III.....100
1971 James Cordonier.....97	

HANDICAP

1928	B.M. Crawford	85	1972	Ronald Skaggs	98
1929	F.E. Jenson	97	1973	Richard Bowen	99
1930	W.W. Bradbury	93	1974	Jeff Cook	99
1931	O.B. Franz	95	1975	Russ Baldwin	98
1932	Henry Hughes	92	1976	Robert Harper	98
1933	O.B. Franz	95	1977	Leo Harrison III	97
1934	E.J. Boenker	94	1978	Chris Frick	98
1935	C.J. Mustion	96	1979	Robert Bryant	99
1936	Dave Henry	94	1980	Charles Emerick	98
1937	Butch Allen	96	1981	Von Kinchloe	96
1938	Paul Trower	94	1982	William Clifton	98
1939	C.W. Spaunhorst	96	1983	Jimmy Miller	97
1940	P.H. Heitman	96	1984	Richard Wessel	97
1941	Dr. J.W. Hardy	97	1985	Ron Wayland	97
1942	E.F. Best	96	1986	Kelly Roberts	96
1943	Ernest Jelly	98	1987	Russell Phillips	98
1946	A.H. Fruin	98	1988	Jim Curtin	98
1947	W.H. Raup	97	1989	Richard Anderson	97
1948	Leo Calvin	99	1990	Warren Pinson	99
1949	Ray Paugh	98	1991	Tom Lukomske	97
1950	Charles Surbaugh	98	1992	Robert Hicks	98
1951	Ronald Anderson	99	1993	Jesse Hamblen	98
1952	S.J. Amery	96	1994	Chris Kiernan	96
1953	Theo C. Hase	92	1995	Leo Harrison III	100
1954	E.R. Michaels	95	1996	Jim Hendricks	96
1955	W.C. Chadwell	98	1997	Tom Lukomske	99
1956	Robert McGinniss	99	1998	Howard Scott	99
1957	Tom Shoots	96	1999	Jordan Holmes	100
1958	J.D. Overstreet	96	2000	Matthew Drexler	99
1959	Bill Heiter	95	2001	Leo Harrison III	97
1960	M.G. Michael	98	2002	Leo Harrison III	99
1961	Hugh Laughlin	98	2003	Randy Buhr	100
1962	G.A. Minch	99	2004	Scott Oliphant	96
1963	P. Brooks	93	2005	Larry McKinley	97
1964	W. Kennedy	96	2006	Alex Perret	99
1965	D. Smith	99	2007	Rachel Hopkins	99
1966	Walter Huff	99	2008	Garrett Ray	98
1967	William King	97	2009	Chris Gerber	97
1968	Sam Fuller	97	2010	Chris Gerber	98
1969	Morris Mills	99	2011	Gary Hartley III	94
1970	Tom Senkevech	98	2012	Rachel Hopkins	99
1971	James Tate	97			



beomat USA



9099 Bank Street, Suite B • Valley View, OH 44125
1-800-742-0425 ~ 216-674-0200

Now Distributing Beomat Trap and Skeet Machines



MJT 400 Trap



MS 700 Skeet Set

TRAP & SKEET MACHINES

Beomat • Pat-Trap • Atlas trap • Lincoln • Hunters Point

REMOTE & VOICE RELEASES

Canterbury • Ventriloquist • Long Range • Top-Gunn

REPLACEMENT PARTS & SERVICE

Beomat • GMV • Pat-Trap • Remington • Winchester
Atlas • Lincoln • Promatic • Parker-Boss

*On-Site Service Calls • Troubleshooting • Repairs & Rebuilds
Pre-Owned Machines • Order Online*

www.beomatusa.com

www.qualityreplacementparts.com

VETERAN

1970	Ernest Jelly	97	1992	Maurice Bryant.....	198
1971	Ernest Jelly		1993	Bill King	196
1972	Unknown		1994	B.J. Wilson	195
1973	Unknown		1995	Joe Clements	194
1974	Wyatt Hill	99	1996	Mel Willard.....	193
1975	Ted Etem.....	192	1997	Claude Felix	197
1976	John Henderson	195	1998	Vern Roberts	198
1977	John Henderson	188	1999	Larry Hartwig	192
1978	Virgil Pitman	192	2000	Robert Slocum.....	194
1979	Virgil Pitman	197	2001	Robert Graf.....	197
1980	Dennis Fleshman	195	2002	James Badaracco	197
1981	Virgil Pitman	188	2003	Robert Slocum.....	198
1982	Warren Ash	199	2004	Tom Lukomske.....	199
1983	Ray Stine	194	2005	Karrol Hillebrand	197
1984	Virgil Pitman	198	2006	Karrol Hillebrand	199
1985	Leo Harrison, Sr.	196	2007	Tom Lukomske.....	200
1986	Leo Harrison, Sr.	193	2008	Karrol Hillebrand	200
1987	Roy Rinkenbaugh.....	195	2009	Karrol Hillebrand	198
1988	Roy Rinkenbaugh.....	196	2010	Dempsey Gottschalk.....	196
1989	Bill King.....	194	2011	John McCormick	195
1990	Bill King.....	195	2012	Jerry Wooden.....	199
1991	Ted Gundy	196			

SENIOR VETERAN

1986	Wesley Law	193	2000	Ted Gundy	197
1987	Leo Harrison.....	198	2001	Claude Felix	198
1988	Virgil Pitman	195	2002	M.E. Wolfenbarger	198
1989	Roy Rinkenbaugh.....	195	2003	Robert Hicks.....	197
1990	Dennis Fleshman	197	2004	Glenn Taylor.....	195
1991	Roy Rinkenbaugh.....	195	2005	Eddie Schnieder.....	196
1992	Roy Rinkenbaugh.....	196	2006	Robert Slocum.....	196
1993	Leo Harrison.....	197	2007	James Badaracco	200
1994	Cecil Rhodes	193	2008	James Badaracco	194
1995	Ted Gundy	196	2009	James Badaracco	191
1996	James Taylor.....	191	2010	Dennis Harbit	196
1997	James Taylor.....	193	2011	Bosco Roberts	197
1998	B.J. Wilson	198	2012	Fred Naugle	198
1999	C.E. Barnhart.....	191			

2013 MISSOURI REGISTERED SHOOT

FEB. MARCH APRIL MAY JUNE JULY AUG. SEPT. OCT. NOV.

EASTERN ZONE

Gateway	14	*3,4,5	2	7	3	8	13
St. Louis Skeet/Trap	24	21	26	23	28	25	22 27

CENTRAL ZONE

Bosco's	28	25-26	29-30	20-21	24-25	21-22	
Macon *63"	14	12	9	7	11	8	13
MTA	16-17	20-21,27	13-29	15-16,**29	11-14	17-18	28-30 1-6
Sedalia	7	5	2	7			6
United Sportsman	14	5	9	14	25	15	

WESTERN ZONE

KCTA	9,10	6-7	*4-5, 24-27	13-16	4,5,6,7 20,21	1-4,17-18 30-31	1-2, 15-16 29 27	12-13 19-20 3-4
Lake Lotawana	24	28	26	30	28	25	29	27
Ozark Stooter's	1/19, 2/9	9,10	11					

* DENOTES ZONE SHOOT
 MO High School Shoot - April 27 MTA ~ MO AIM & SCTP Championship - June 16 MTA ~ MO AIM Championships - June 29 MTA

MTA GUN CLUBS

BOSCO'S GUN CLUB

Highway 63 - Lancaster, MO 63548
660-457-3919

GATEWAY GUN CLUB

13547 Missouri Bottom Rd. - Bridgeton, MO 63044
314-344-1050

K.C.T.A. PUBLIC SHOOTING PARK

6420 N.E. 176 Street - Smithville, MO 64089
816-532-4427

LAKE LOTAWANA SPORTSMEN'S CLUB

29708 E. Alley Rd. - Lake Lotawana, MO 64086
816-578-5376

MACON "63" GUN CLUB

29790 Jigsaw Place - Macon, MO 63552
660-239-4507

M.T.A GUN CLUB

51 Trapshooter's Rd. - Linn Creek, MO 65052
573-346-2449

OZARK SHOOTER'S SPORTS COMPLEX

759 US Highway 65 - Walnut Shade, MO 65771
417-443-3093

SEDALIA ROD & GUN CLUB

420 N.W. 21 Road - Warrensburg, MO 64093
660-747-2564

ST. LOUIS SKEET & TRAP

18854 Franklin Road - Pacific, MO 63069
636-271-4210

UNITED SPORTSMEN'S CLUB

326 Troy Street - Jefferson City, MO 65109
573-893-6088

*Unleaded and Diesel Gas
Grocery, Beer, Liquor,
Tobacco Products, Lottery,
Ice, Soda and More!*

*We now have Hunt Brothers
Pizza & Chicken*

JUST
A-LITTLE STORE

under new ownership-family owned and operated

1.8 miles down A-Road off Hwy 54

Store Hours:

Mon-Sat 6am-9pm, Sun-6am-8pm

573-873-2395



**Just
Smok'em**



F3 SuperTrap with Under-Single barrel and Over & Under barrel. Wood grade 8

www.blaser-usa.com

Blaser **F3** SUPER TRAP

Blaser USA, Inc. · Phone (210) 377 2527

Made in Germany

10 Year Warranty on all Blaser Guns

MISSOURI TRAPSHOOTERS ASSN.

51 Trapshooters Road

Linn Creek, MO 65052